



SENSOLIST



SENSOLIST RTU/40INPUT

Description

The 40-input module in the SENSOLIST **IPANEL solutions** category is designed to monitor the status of existing inputs, including MCCBs, MCBs, power meter devices, and power supply inputs in electrical panels. By supporting the RS-485 port and Modbus protocols, it can connect to all industrial devices.

- Detects system faults
- Connects to all SENSOLIST RTUs
- Monitors the operation time of the connected device
- Electrical protection of device inputs against overvoltage
- Microcontroller architecture based on ARM-Cortex M4 chips
- Connects multiple devices via the RS-485 port on a two-wire BUS

Features



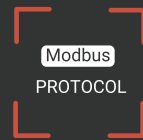
RS-485 INDUSTRIAL



1-WIRE UNI



OUTPUT Transistor



Modbus
PROTOCOL

ASCII/RTU



RAIL Mount



INPUT Dry contact

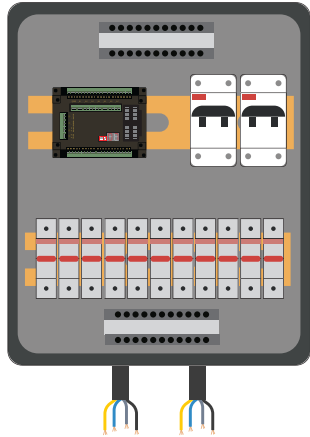
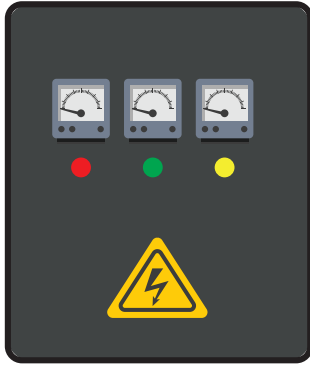


ARM CORTEX M4



POWER INPUT

Technical Specification



| General | | |
|------------------------|---|-----|
| Processor | ARM processor with encryption accelerator | ✓ |
| Memory | - | ✓ |
| Operating System | Embedded RTOS | ✓ |
| Master Protocols | Modbus (RTU/TCP) | ✓ |
| Slave Protocol | Modbus | ✓ |
| Channels | | |
| Communication Channels | RS-485 | 2 ✓ |
| Physical | | |
| Power Supply | 24 VDC | ✓ |
| Packaging | Rack Mounted | ✓ |
| | Wall Mounted | ✓ |
| | DIN-rail Mounts | ✓ |
| Environmental | -40°C to +70°C, %95-5 RH | ✓ |
| Plant Input/Output | | |
| Inputs | 40 input 220vAC | ✓ |
| Digital Outputs | 1 TR | ✓ |
| Digital Inputs | 7 | ✓ |

